

June - 22

TNPSC BITS

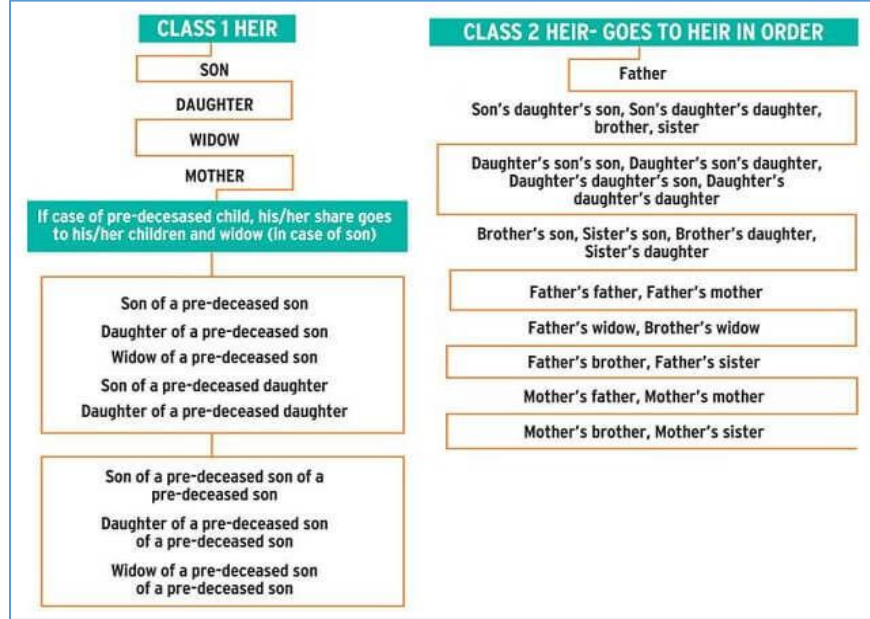
- ❖ Aravindan Selvaraj has been appointed as Chairman of the Associated Chambers of Commerce and Industry of India (ASSOCHAM) Tamil Nadu State Development Council for 2024-25.
- ❖ President Droupadi Murmu has appointed Bhartruhari Mahtab, seven-term MP from Cuttack of Odisha, as the pro tem Speaker of the 18th Lok Sabha.
- ❖ Prime Minister inaugurated the new campus of the Nalanda University near Rajgir, Bihar.
- ❖ The Delhi International Airport has launched the self-service mechanism which enables passengers to drop their luggage, collect tags, and complete the check-in process more efficiently and swiftly.
- ❖ The Indian Army has launched a first-of-its-kind skin bank facility to aid treatment of severe burn injuries and other skin-related conditions for service personnel and their families.
- ❖ Film-maker Vinod Ganatra has become the first Indian to be conferred the prestigious 'Nelson Mandela Lifetime Achievement Award' of South Africa for his contribution to films.
- ❖ Ukraine become the first country to create a new stand-alone branch of the military dedicated to drone systems, known as the Unmanned Systems Forces.
- ❖ Chip-maker Nvidia became the world's most valuable company after its share price climbed to an all-time high (\$3.34tn).
- ❖ Cricketer Virat Kohli reclaimed his position as India's most valued celebrity, boasting a brand value of USD 227.9 million.
- ❖ Thailand's Senate has passed the marriage equality bill to recognise same-sex marriage and becoming the first country in Southeast Asia to legalize allow same-sex marriage.

TAMIL NADU

Adopted person's legal heirship

- ❖ The Madras High Court has ruled that, the biological relatives of a person who had got adopted, cannot be considered as his legal heirs in order to stake a claim over the properties that he had inherited from the adoptive family.
- ❖ Adoptions has been managed as per the Hindu Adoptions and Maintenance Act of 1956.

- ❖ All ties with the biological family would get severed on the day when a person gets adopted by another family.
- ❖ Therefore, his/her biological relatives could not seek legal heirship certificate after his/her death.



Eight endangered flora in TN

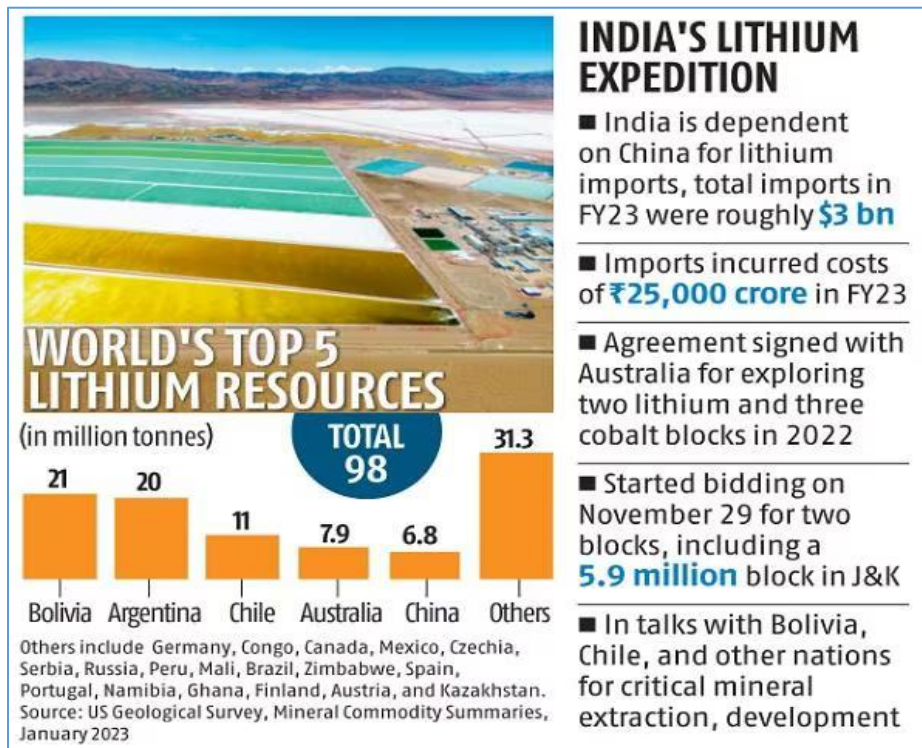


- ❖ Tamil Nadu Government's mission to conserve endangered and rare flora having shortlisted the eight species of rare plants, which fall under the vulnerable, endangered and critically endangered category.

- ❖ These eight plants have been shortlisted from a list of 25 rare plants.
- ❖ The eight species have been categorised as ‘prioritised species’.
- ❖ *Vernonia shevaroyensis* that occurs in Shevaroy hills in Salem is a critically endangered tree.
- ❖ There was one tree of *Vernonia shevaroyensis* at the Botanical Survey of India’s botanical garden at Yercaud.
- ❖ *Phyllanthus anamalayanus* found in Anamalai hills and some locations of the Valparai plateau in Coimbatore district is a critically endangered species.
- ❖ *Dipterocarpus bourdillonii* found in the Anamalai Tiger Reserve, and *Elaeocarpus blascoi* found in Vattakanal shola forests of Palani hills in Kodaikanal are the other plants fall under the critically endangered category.

NATIONAL

Lithium assets in Argentina



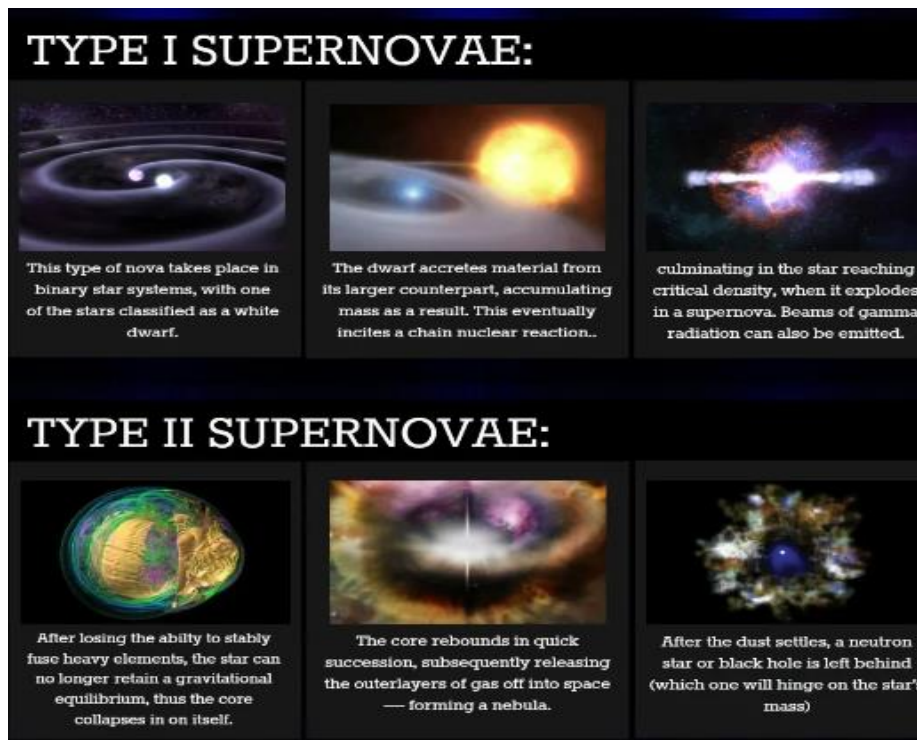
- ❖ Coal India Ltd is exploring lithium blocks in Argentina along with a U.S. company to secure supplies of the battery material.
- ❖ India has been exploring ways to secure supplies of lithium, a critical raw material used to make electric vehicle batteries.

- ❖ India had also proposed a critical minerals trade deal with U.S., which would prohibit the imposition of tariffs on both countries by each other.

SCIENCE AND TECHNOLOGY

SN 2023adsy Supernova

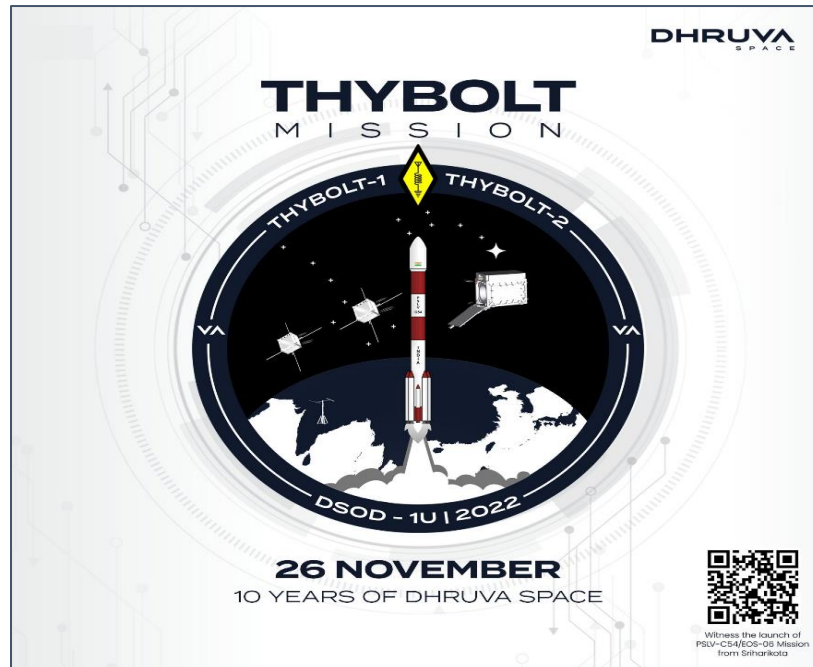
- ❖ Using the James Webb Space Telescope, astronomers discovered SN 2023adsy, the most distant Type Ia supernova detected.
- ❖ Supernovae (SNe) are powerful and luminous stellar explosions.
- ❖ Supernovae are generally classified into two groups depending on their atomic spectra.
- ❖ Type I lack hydrogen in their spectra, and Type II displays hydrogen spectral lines.
- ❖ Type Ia supernovae (SN Ia) are found in binary systems in which one of the stars is a white dwarf.



Dhruva Space's Thybolt satellites

- ❖ Dhruva Space's maiden satellite mission comprising Thybolt-1 and Thybolt-2 satellites have deorbited after a combined 15,000 orbits.

- ❖ The mission was launched on November 26, 2022 on the Hyderabad-based space start up's 10th anniversary.
- ❖ The mission engaged many ham radio operators across India as well.



ENVIRONMENT

Fires in Pantanal Wetland



- ❖ Brazil's Pantanal, the largest tropical wetland on earth, is ablaze, with fires.

- ❖ This year is threatening to overtake 2020 as the Pantanal's worst year for wildfires on record.
- ❖ It is located in the upper Paraguay River basin.
- ❖ The Pantanal straddles Brazil's border with Bolivia and Paraguay.
- ❖ The UNESCO World Heritage Site, which covers an area more than twice the size of Portugal, is home to the world's largest jaguar species.
- ❖ Around 95% of the Pantanal is under private ownership.

STATES

First green state headquarters



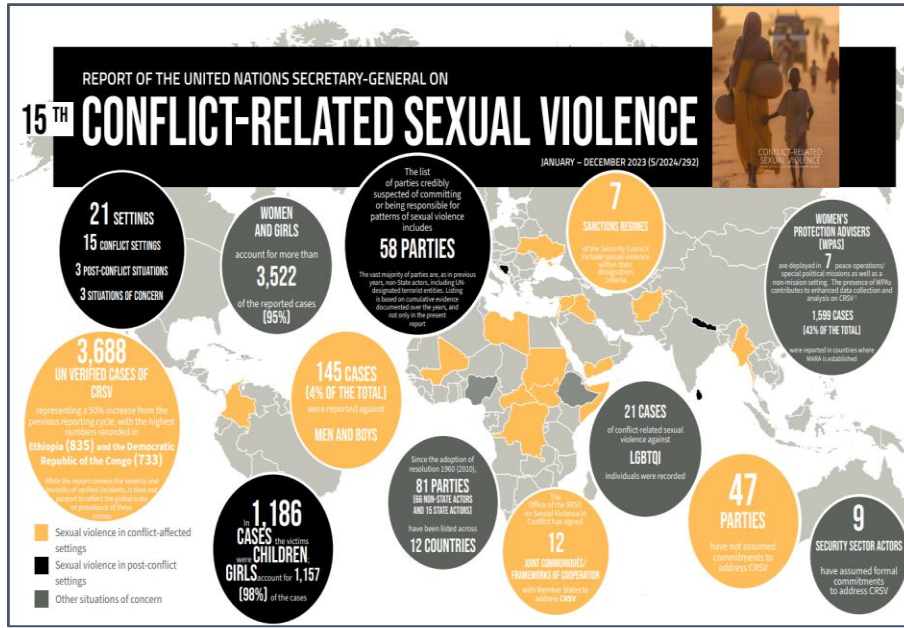
- ❖ The Assam state Secretariat became the country's first green state government headquarters.
- ❖ It was inaugurated a 2.5 MW solar power project on its campus.
- ❖ The CM also, announced that Ministers and government officials will have to pay for their electricity consumption.
- ❖ This initiative aims to reduce electricity consumption.
- ❖ And it has already been implemented in 8,000 government offices, schools, and other institutions throughout the State.

IMPORTANT DAYS

International Day for the Elimination of Sexual Violence in Conflict 2024 - June 19

- ❖ On 19 June 2015, the United Nations General Assembly proclaimed this day.

- ❖ It aims to raise awareness of the need to put an end to conflict-related sexual violence, to honour the victims and survivors of sexual violence.
- ❖ The term “conflict-related sexual violence” refers to rape, sexual slavery, forced prostitution, forced pregnancy, forced abortion, enforced sterilization, forced marriage that is directly or indirectly linked to a conflict.



MISCELLANEOUS

Hidden Chamber in Ghodbunder Fort



- ❖ A hidden chamber was recently discovered beneath the inner layers of Ghodbunder Fort during restoration work.
- ❖ Ghodbunder Fort, located in Thane, Maharashtra, on the Ulhas River, was built by the Portuguese and completed in 1730.

- ❖ Initially used for horse trading, it was later occupied by the Marathas and the British.
- ❖ The fort features a Portuguese church from the early 16th century and various historical structures.

Ancient Pearl City Tuam

- ❖ Excavations in the Umm Al Quwain area of the UAE have revealed 6th century ruins.
- ❖ That could be the lost city of Tu'am.
- ❖ The ruins are situated on Al Sinniyah Island, part of a collection.
- ❖ The earliest signs of occupation dating back to the 4th century AD and peaking in the 5th or 6th century.
- ❖ The site is the biggest town of that time ever found on the Gulf coast of the Emirates.

