

March - 08

## TNPSC BITS

- ❖ Tamil Nadu Chief Minister handed over the Kalaignar Ezhuthukol Award 2023 to journalists Nakkeeran R. Gopal and Sugitha Sarangaraj.
- ❖ For the effective management of the human-wildlife conflict, PM announced the establishment of a centre of excellence at Wildlife Institute of India campus in SACON, Coimbatore.
- ❖ The NLC India Limited (NLCIL) launched a mobile safety app – Aran to play an important role in ensuring a ‘zero accident’ environment at NLCIL.
- ❖ The Supreme Court ruled that, the right against disability-based discrimination as a fundamental right, as it ruled that “visually impaired candidates are eligible to participate in selection for the posts under the judicial service”.
- ❖ The Tamil Nadu government issued orders for the creation of 17 new Maragatha Pooncholai or village woodlots at an outlay of ₹404.991 lakh.
  - With this Phase III, the total number of the Maragatha Pooncholai in villages reaches 100, marking a significant step forward in Green Tamil Nadu Mission.
- ❖ The four-day Mobile World Congress (MWC) 2025 was held in Barcelona, Spain under the theme "Converge, Connect, Create."
- ❖ Architect Liu Jiakun of China was awarded the 2025 Pritzker Architecture Prize.
- ❖ The Microsoft has launched a new voice-activated AI assistant - Dragon Copilot to helping doctors and healthcare professionals.

## TAMIL NADU NEWS

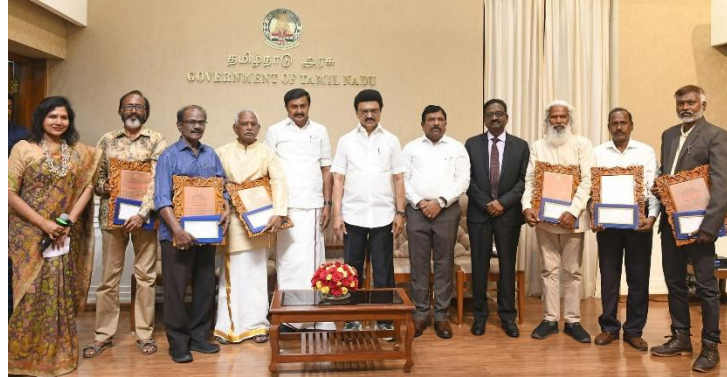
### All-party meeting on Delimitation 2025

- ❖ An all-party meeting chaired by Tamil Nadu CM unanimously urged the Centre to retain the existing number of Lok Sabha seats and the constitutional boundaries for the next 30 years beyond 2026.
- ❖ The resolution adopted at the meeting said Tamil Nadu’s existing 7.18% of the total seats must not be reduced under any circumstances during the delimitation exercise.
- ❖ In 2001, the 84th Constitutional Amendment had frozen the constituency boundaries till the first Census after 2026.
- ❖ If the Centre retained the present 543 Lok Sabha constituencies, Tamil Nadu’s representation will be reduced by eight seats.

- ❖ Tamil Nadu would get additional 22 constituencies if the number of constituencies were increased to 848 and delimitation was followed on per cent basis.



### **Kalai Chemmal award 2024**



- ❖ Six artists were selected for the 'Kalai Chemmal' award for the year 2024-25.
- ❖ A. Manivelu was awarded in the traditional painting category.
- ❖ V. Balachander and K. Kanniyappan were awarded in the sculpture category.
- ❖ K. Muralitharan and A. Selvaraj were awarded in the modern painting category, and N. Raghavan awarded in the sculpture category.

## **NATIONAL NEWS**

### **Arresting Powers of Custom and GST Officials**

- ❖ The Supreme Court upheld the rights of authorised officers to make arrests under the Customs Act 1962 and the CGST Act 2017.



- ❖ According to the SC, while officers under the Customs Act and CGST Act are not police officers, they “enjoy analogous powers such as the power to investigate, arrest, seize, interrogate, etc”.
- ❖ But the powers of arrest, search and seizure exercised by police, and must be bound by the same restrictions that the police officials face under the Code of Criminal Procedure, 1973 (CrPC).
- ❖ Under Section 104(4) of the Customs Act, some of the select offences have been classified as ‘cognizable’.
- ❖ So, a customs officer (like the police) may arrest someone without a warrant if they are suspected of one of these offences.
- ❖ Section 104(5) says all other offences under the Customs Act will be considered non-cognizable, and a Magistrate must sign a warrant for arrest and investigation to take place.
- ❖ Similarly the Section 132 of the CGST Act classifies certain offences as cognizable and non-cognizable, and provides punishments based on the gravity of the crime.

Particulars	GST (Search under Section 67, CGST Act)	Income Tax (Search under Section 132, Income Tax Act)
Legal Authority	Warrant issued by an officer not below <b>Joint Commissioner</b> , based on "reasons to believe" tax evasion exists.	Warrant issued by an officer not below <b>Director General or Chief Commissioner</b> , based on "reasons to believe" undisclosed income exists.
Search Trigger	Suspicion of suppressed supply, fake ITC claims, or unaccounted goods.	Suspicion of undisclosed income, failure to file returns, or unreported assets.

### **PM-SYM scheme 2025**

- ❖ The government has introduced new features and expanded outreach efforts to improve the implementation of the Pradhan Mantri Shram Yogi Maandhan (PM-SYM) scheme.
- ❖ PM-SYM is a voluntary and contributory pension scheme aimed at providing the financial security to workers in the unorganised sector.
- ❖ It is administered by the Ministry of Labour and Employment and Managed by LIC of India.
- ❖ The Government of India matches the worker’s contribution on a 1:1 basis.
- ❖ Minimum Assured Pension is ₹3,000 per month after 60 years of age.

- ❖ If the beneficiary passes away, the spouse receives 50% of the pension amount as a family pension.
- ❖ Family pension is applicable only to spouse.

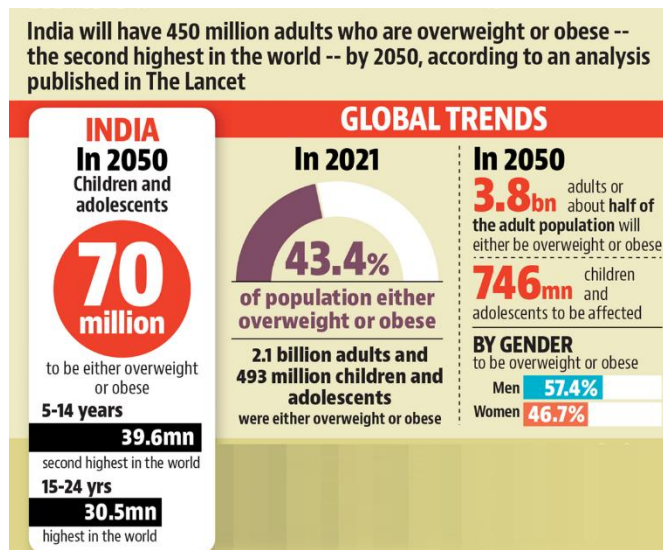
*Celebrating*  
**6** years of  
**Pradhan Mantri Shram Yogi Maandhan**

**Key Features**

- Minimum assured pension of **₹3,000 per month after 60 years of age**
- The Government of India matches the worker's contribution on a **1:1 basis**
- The scheme is voluntary, allowing workers to **contribute based on their affordability and requirement**
- **Family pension** provides 50% of the pension amount to the spouse after the beneficiary's death
- **Flexible exit provisions** with specified conditions
- Eligible workers can **register at Common Service Centres** or through the **Maandhan portal**
- The scheme is **administered by LIC**, ensuring financial stability and credibility

2/2

## Obesity in India 2025



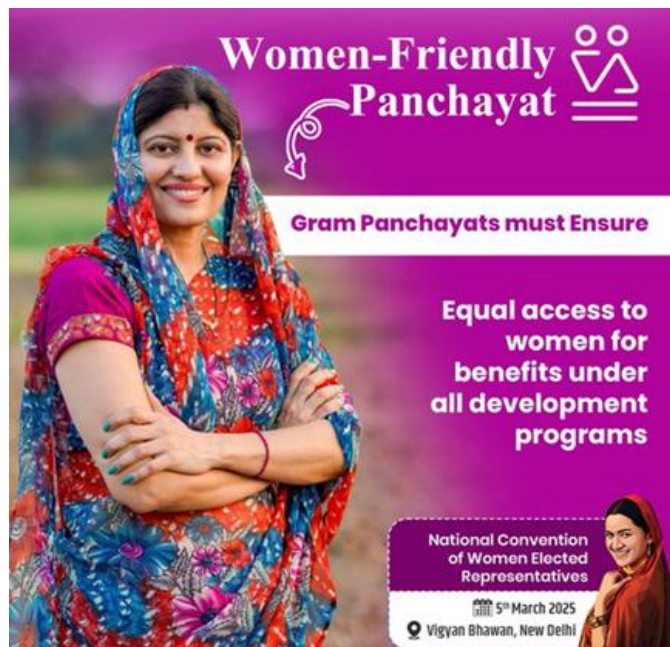
- ❖ The Lancet study has predicting that 218 million men and 231 million women in India, nearly one-third of the country's population, will be obese by 2050.
- ❖ In 2021, India had the highest number of the overweight or obese young people, surpassing China and the United States.



- ❖ China (with 627 million affected individuals), India (450 million) and the USA (214 million) would continue to be the three countries with the largest numbers of people with overweight and obesity.

### **Model Women-Friendly Gram Panchayats**

- ❖ The Ministry of Panchayati Raj has launched the Model Women-Friendly Gram Panchayat (MWFGP) initiative.
- ❖ It is a gender-inclusive governance initiative has designed to enhance women's participation, safety, and leadership at the grassroots level.
- ❖ One Model Women-Friendly Gram Panchayat in each district across India.
- ❖ The Dedicated Monitoring Dashboard was launched to track the progress and implementation.
- ❖ The Ministry is organizing nationwide Mahila Gram Sabhas on March 8, 2025, coinciding with International Women's Day.



## **INTERNATIONAL NEWS**

### **Cairo Declaration 2025 – Arab League**

- ❖ An Emergency Summit of the Arab League adopted a \$53-billion Egyptian plan for the reconstruction of Gaza as a “comprehensive Arab strategy”.
- ❖ This Cairo Declaration follows the Bahrain Declaration from the last Arab League Summit in Manama in May 2024.

- ❖ The plan supports a two-state solution based on the 1967 borders, with East Jerusalem as Palestine’s capital.
- ❖ It also calls for a “Gaza administration committee” of the qualified Gazans for a transitional period and a trust fund for recovery projects.



### **Golden Dome Missile Defence Shield**



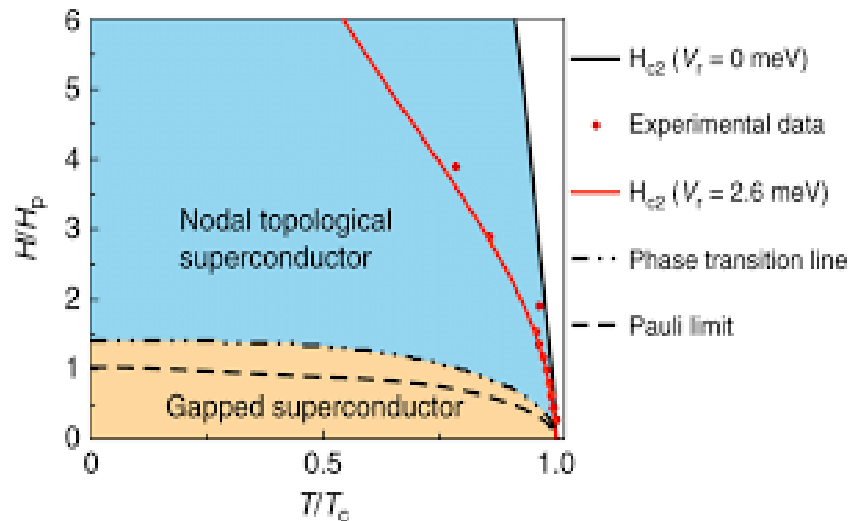
- ❖ Donald Trump has vowed to construct a 'Golden Dome' - similar to Israel's 'Iron Dome' missile defence.

- ❖ Golden Dome will protect against a broader range of missile threats, including those from peer and near-peer adversaries like hypersonic missiles.
- ❖ It will protect the entire US territory from advanced missile threats, including hypersonic and ballistic missiles.

## SCIENCE AND TECHNOLOGY NEWS

### Bose Metal

- ❖ Researchers have recently discovered a potential new state of matter, the Bose metal.
- ❖ NbSe<sub>2</sub> becomes a superconductor at the low temperature but with additional 'abilities'
- ❖ A Bose metal is a kind of anomalous metallic state (AMS).
- ❖ The 'anomaly' is that the Cooper pairs are formed but don't condense into a superconductor.
- ❖ They found between a regular metal and a superconductor.

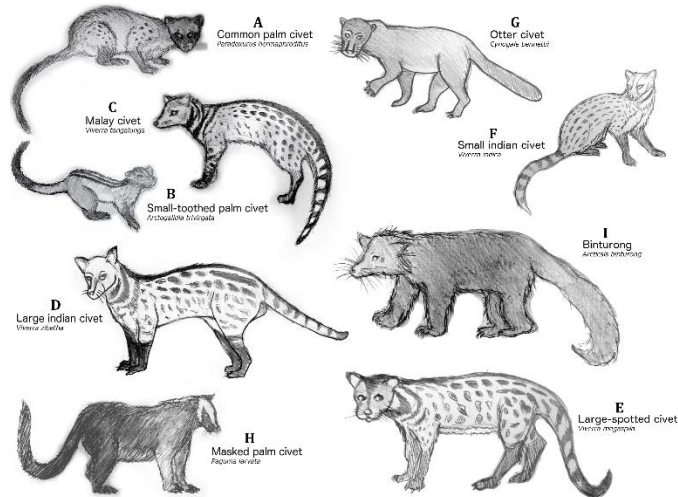


## ENVIRONMENT NEWS

### Civet Cat in Andhra Pradesh

- ❖ A rare civet cat, typically found in the Seshachalam forests near Tirumala, was spotted near Tadepalli in Guntur district.
- ❖ There are 8 different species of Wild civets found in India.

- ❖ The rarest of all civets is the Malabar large-spotted civet (*Viverra civettina*), also known as the Malabar civet, endemic to the Western Ghats.



### **Ruellia elegans in Assam**

- ❖ *Ruellia elegans*, an invasive plant from Brazil, recorded for the first time in Assam's oil town Digboi.
- ❖ It is a flowering plant native to Latin America, invasive to India.
- ❖ India has 6 native species of *Ruellia* namely, *beddomei*, *ciliata*, *malabarica*, *patula*, *sibua*, and *sivarajanii*.



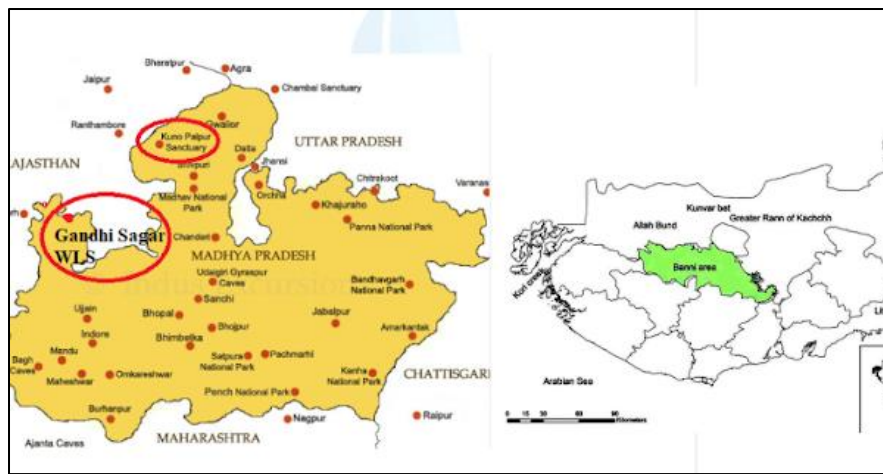
### **STATES' NEWS**

#### **Gandhisagar Sanctuary - Madhya Pradesh**

- ❖ The Cheetah Reintroduction Project will now extend to the Banni Grasslands in Gujarat and Gandhisagar Sanctuary in Madhya Pradesh.

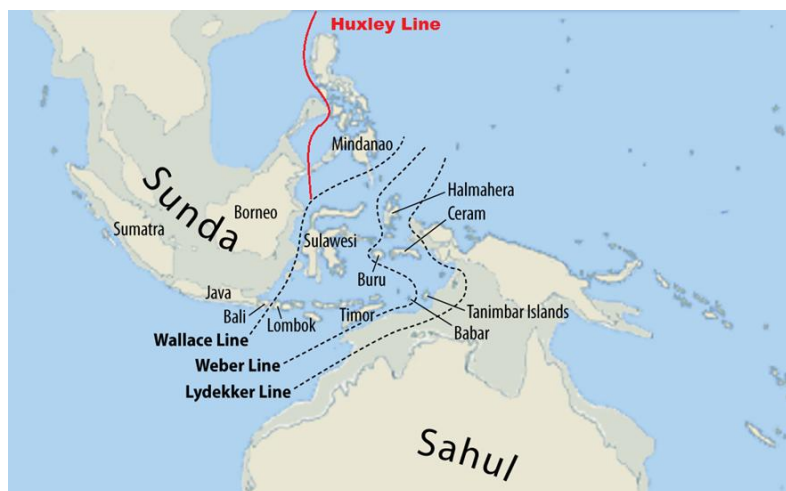


- ❖ Banni Grasslands, located in the Kutch district of Gujarat, is a vast 2,500 sq km protected forest ecosystem.
- ❖ It offers a semi-arid landscape similar to African savannas, providing an ideal habitat for cheetahs.
- ❖ Gandhisagar Sanctuary spans across the Mandsaur and Neemuch districts.
- ❖ This region, also known as Nimar, borders Rajasthan and features a dry, semi-arid landscape.
- ❖ Geographic conditions resemble cheetah-friendly landscapes found in Africa.



## MISCELLANEOUS NEWS

### Wallace Line in Biodiversity



- ❖ In the late 19th century, the English naturalist Alfred Russel Wallace had noticed a dramatic shift in the composition of the organisms as he moved from Asia to Australia, New Guinea, and other islands nearby.

- ❖ He posited an invisible barrier in the ocean, later called the Wallace line.
- ❖ It was running between the islands of Bali and Lombok, striking north between Borneo and Sulawesi before curving south of Mindanao.
- ❖ According to him, this line was like a fence between the different kinds of animals on the two sides.
- ❖ West of the Wallace Line consists of monkeys, apes, rhinos, squirrels, tigers, and hornbills, which are characteristic of the Asian ecosystem.
- ❖ East of the Wallace Line includes the tree kangaroos, cockatoos, and honeyeaters, linked to the Australian ecosystem.
- ❖ The region between the Wallace Line and the Weber Line is known as Wallacea.
- ❖ This Isolated Wallacean islands have lower biodiversity than nearby continents and host unique species like the Komodo dragon, babirusa, and giant bees.

