

November - 25

TNPSC BITS

- ❖ Air India has received Design Organisation Approval (DOA) from the Directorate General of Civil Aviation (DGCA), designated as CAR 21 approval.
- ❖ The Global Soil Conference 2024 took place in New Delhi.
- ❖ The Department of Posts releases a Commemorative Postage Stamp on Sickle Cell Eradication - 2047.
- ❖ Prasar Bharati, India's public broadcaster, has launched its own OTT platform, 'Waves'.
- ❖ Shivangi Desai from Pune, has won the title of Miss Charm India 2024 and will represent India at Miss Charm 2024 in Vietnam.
- ❖ India's Women's Hockey Team has retained their title at the Women's Asian Champions Trophy by defeating China.
- ❖ GAIL (India) Limited has won the SAP ACE Award 2024 for Best Financial Transformation, for the second consecutive year.

TAMIL NADU


16th FC and Tamil Nadu

16th Finance Commission

The Government of India, on **31-Dec-2023** with the approval of the President of India, has constituted the Sixteenth Finance Commission, in pursuance to **Article 280(1) of the Constitution**.

- It is a **constitutionally mandated body** that is at the centre of **fiscal federalism**.
- Its core responsibility is to evaluate the state of finances of the Union and State Governments, recommend the **sharing** of taxes between them.
- The first Finance Commission was setup in **1951**.

Dr Arvind Panagariya, former Vice-Chairman, NITI Aayog, and Professor in Columbia University will be the Chairman of the **16th Finance Commission**.



सत्यमेव जयते



- ❖ Arvind Panagariya said Tamil Nadu made a 'masterclass' presentation that was well-researched and comprehensive towards the 16th FC.



- ❖ He said that Tamil Nadu's presentation really went into depth to make the case as to why it should be 50%.
- ❖ The issues being faced by the coastal States were highlighted in the state government's presentation.
- ❖ The state said that the commission should reduce the weightage given to income distance, area, and forest and ecology while increasing that given to demographic performance.
- ❖ Tamil Nadu has asked the Commission to consider adopting a different method for measuring per capita income – from nominal to purchasing power parity (PPP) – while calculating 'income distance'.
- ❖ Income distance is used to calculate the share of states in the divisible pool of taxes.
- ❖ It is the distance between a state's income and the state with the highest income.
- ❖ Tamil Nadu has sought reducing the income distance weightage from 45 per cent (as recommended by the 15th Finance Commission) to 35 per cent and demanded its calculation after adjusting for purchasing power.
- ❖ Income distance must be adjusted for PPP and population must be derived using the 1971 Census, it said
- ❖ The state has recommended increasing the demographic performance weightage from 15 per cent to 20 per cent and providing 10 per cent weightage for share of urbanisation.
- ❖ As for population, the 15th Finance Commission had given a 15% weightage, and used the 2011 Census population figures.
- ❖ The 15th Finance Commission had suggested a 12.5% weightage to the demographic performance variable, and Tamil Nadu had recommended that it must be increased to 20%.
- ❖ As a whole, the State had recommended a 35% weightage to the income distance, 20% each to population and demographic performance, 15% to contribution to the economy, and 10% to urbanisation.
- ❖ A state's contribution to the national gross domestic product must get 15 per cent weightage.
- ❖ Gujarat and Telangana have made similar suggestions.
- ❖ For instance, if Tamil Nadu accounted for 8% of the country's GDP, the State's share, based on this criterion, would be 8%.
- ❖ Tamil Nadu has also sought increasing the vertical devolution (between the central government and states) from 41 per cent to 50 per cent.

- ❖ The Finance Commissions had not served the interest of Tamil Nadu, and that though the 9th Finance Commission had recommended a larger share for the State, its share had been declining.
- ❖ From the recommendation of the IX Finance Commission for 7.93% to that of the XV Finance Commission for 4.07%, the devolution share to Tamil Nadu has been consistently on the decline.
- ❖ The 15th Finance Commission had used a disaster relief index for partial devolution of disaster relief grants, but Tamil Nadu had some reservations on that.
- ❖ The decrease in the devolution to the States and the increasing share of the States in projects jointly implemented with the Union government were the two major factors that were adding to the burden of the State governments.

NATIONAL

75 years of India and Sweden

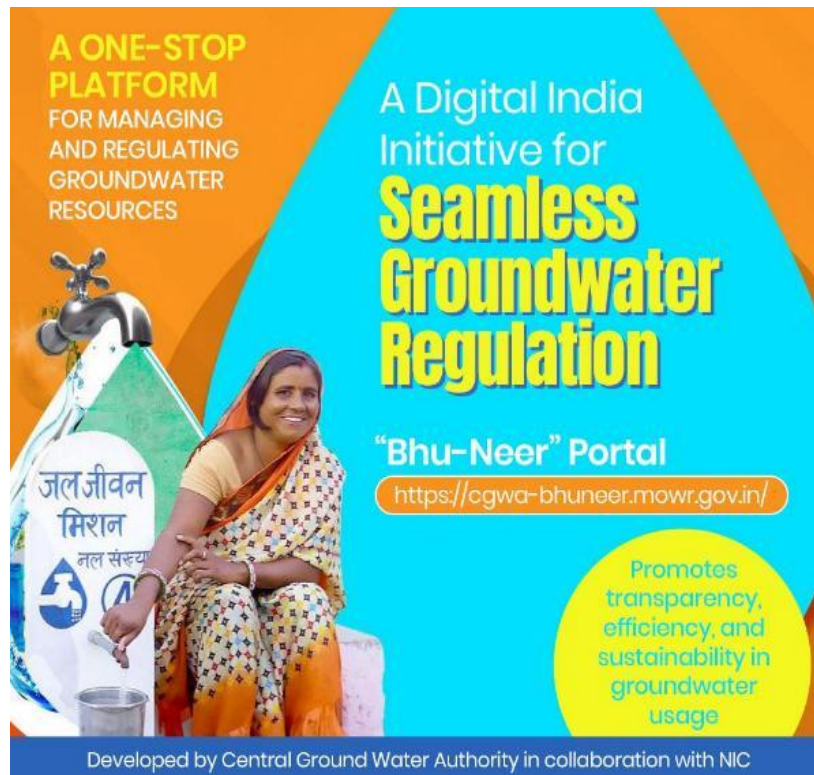


- ❖ For more than 75 years, Sweden has actively supported India's path to the sustainable industrial growth.
- ❖ They cooperate especially in sectors with high emissions and the complex decarbonisation challenges.
- ❖ At COP28 in Dubai, both have launched the India-Sweden Industry Transition Partnership (ITP).

- ❖ It is the part of the second phase of Leadership Group for Industry Transition (LeadIT).
- ❖ ITP aims to accelerate the transition of heavy industries in India and globally, with a focus on flagship projects in the steel and cement sectors.

Bhu-Neer Portal

- ❖ The Centre has launched the newly developed “Bhu-Neer” portal during India Water Week 2024.
- ❖ The “Bhu-Neer” is an advanced portal developed by the Central Ground Water Authority (CGWA).
- ❖ It will serve as a one-stop platform for managing and regulating groundwater resources, aimed at ensuring transparency, efficiency, and sustainability in groundwater usage.
- ❖ It provides the comprehensive details regarding the legal framework governing groundwater extraction, regulations at the state and national levels.




Bima Sugam platform


- ❖ Bima Sugam is a digital platform showcasing the insurance products for the customers to choose from.

- ❖ It displays schemes of various insurers for customers to choose from in single window.
- ❖ It aids to buying, selling, and servicing insurance policies as well as settling claims.
- ❖ The insurance sector was growing at a compound annual growth rate (CAGR) of above 10% over the last 10 years.
- ❖ In 2023-24, the sector grew at a rate of 13%.

The Insurance Regulatory and Development Authority of India (IRDAI) has established a committee to oversee the creation of the Bima Sugam platform, a comprehensive online insurance marketplace.



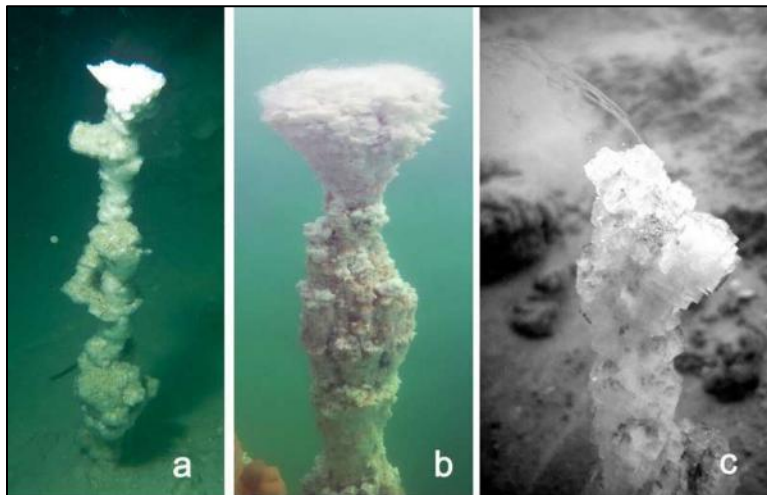
The platform is designed to provide easy access to insurance products and services for individuals and will serve as a centralized hub for insurance companies, agents, brokers, banks, and aggregators.



IRDAI plans to appoint a project consultant responsible for the complete ideation, design, and development of the Bima Sugam platform.

INTERNATIONAL

Salt Chimneys at Dead Sea



- ❖ Researchers have discovered meter-high white salt chimneys on the floor of the Dead Sea.

- ❖ These chimneys are formed by the expulsion of hypersaline fluid from the lake floors.
- ❖ They are formed by the spontaneous crystallization of minerals when the groundwater with an extremely high salt content flows up out of the lake floor.
- ❖ The most famous black smokers found along the mid-ocean ridges and the tufa towers of Mono Lake.

Iraq National Census

- ❖ Iraq is conducting its first comprehensive nationwide census in nearly four decades.
- ❖ The last nationwide census in Iraq was held in 1987.
- ❖ Another one held in 1997 excluded the three northern provinces that make up the semi-autonomous Kurdistan region.
- ❖ The estimated population of Iraq to be 44.5 million.



Global Hunger and Poverty Alliance

- ❖ At the G20 Leaders' Summit, Brazil made the official launch of the Global Alliance Against Hunger and Poverty.
- ❖ 81 countries (including India), 26 international organisations, 9 financial institutions, and 31 philanthropic foundations and some of the non governmental organisations have already joined the Alliance.
- ❖ The Alliance will provide a platform for countries to support each other's' public policies aimed at eradicating hunger and poverty.

- ❖ The Alliance is open to all willing United Nations member and observer states, development partners, and knowledge institutions.
- ❖ Its key contributors include FAO, UNICEF, WFP, the World Bank, and other international organisations.
- ❖ Its programs and policies include diverse strategies such as: school meals; cash transfers; smallholder and family farming support programs; socio-economic inclusion programs; integrated maternal and early childhood interventions; and water access solutions.



ENVIRONMENT

Eurasian Wryneck – Tirupur

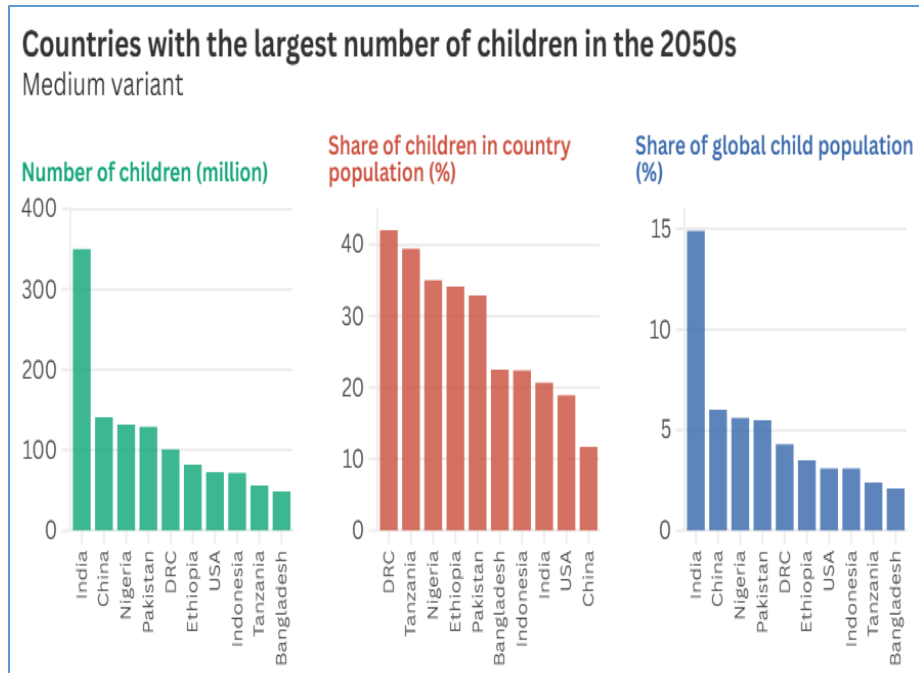


- ❖ Arrival of a Eurasian Wryneck has been recorded for the first time at Nanjarayan Tank in Tiruppur district.
- ❖ The bird breeds in Europe and during winter migrates to African and South East Asian nations.

- ❖ The bird is usually sighted at marshlands from India's north to Central part.

REPORTS AND INDICES

The State of the World's Children 2024



- ❖ The UNICEF released the State of the World's Children 2024 (SOWC-2024) report.
- ❖ The report examines the impact of three long-term global forces - demographic shifts, climate and environmental crises, and frontier technologies.
- ❖ Since 2022, 400 million students around the world have experienced the school closures due to extreme weather.
- ❖ By the 2050s, the global child population is projected to stabilize at around 2.3 billion.
- ❖ India, China, Nigeria and Pakistan are expected to account for more than a third of the world's child population by 2050.
- ❖ India will have approximately 350 million children, despite a decline of 106 million compared to today.
- ❖ Nearly 60 per cent of children globally are projected to live in urban settings in the 2050s, up from 44 per cent in the 2000s.
- ❖ Newborn survival rates globally will increase by nearly 4 percentage points from the 2000s to over 98 per cent.

- ❖ The probability of a child surviving to the age of 5 rises by 1 percentage point from the 2000s to 99.5 per cent.
- ❖ Life expectancy increases from 70 years for girls and 66 for boys born in the 2000s, to 81 years and 76, respectively.
- ❖ By the 2050s, significantly more children are projected to be exposed to extreme climate hazards compared with those in the 2000s.
- ❖ In 2024, over 95 per cent of people in high-income countries are connected to the internet, compared to nearly 26 per cent in low-income countries.

STATES

'Tsunami Ready' villages

- ❖ Twenty-four coastal villages in Odisha were recognised by the Intergovernmental Oceanographic Commission of UNESCO as 'Tsunami Ready'.
- ❖ The recognition was given during the 2nd Global Tsunami Symposium held in Indonesia.
- ❖ Besides, the Tsunami Ready Recognition Certificates were renewed for two villages in the state.
- ❖ They were recognised as Tsunami Ready in 2020.
- ❖ The government has identified 381 villages in the state as tsunami-prone.

